

SECTION 4

Overview of local organisations:

County Durham and Darlington Foundation Trust

- The local acute trust which provides the majority of hospital and community care for residents of County Durham and Darlington
- Runs Bishop Auckland, Durham and Darlington hospitals
- Also runs Weardale, Richardson, Sedgfield and Shotley Bridge Community Hospitals
- Employs over 4,000 staff
- Employ consultants, nurses, radiographers as well as range of non- clinical staff providing what is known as secondary care
- Your local provider of community health services
- Also employs community matrons, specialist nurses, district nurses, school nurses, dieticians, therapy services, providing community health services for people living in County Durham and Darlington
- Patients are referred to acute trusts by GP
- Often called hospital trusts
-

Tees Esk and Wear Valleys NHS Foundation Trust

- Your local mental health trust
- Provides services for people with mental health problems
- Provides services for people with learning disabilities
- Counselling, psychological therapy, medication, support, day services, hospital stays
- Conditions range from anxiety, depression, schizophrenia, eating disorders
- Often abbreviated to TEWV (pronounced chew-vee)
-

North East Ambulance Service

- Your local ambulance trust
- Headquarters at Newburn Riverside, Newcastle
- Covers County Durham, Northumberland and Teesside
- Provides emergency response vehicles
- Runs 999 control centres
- Provides patient transport services for hospital appointments

Durham County Council

- Commissions and provides some health and social care services, together with range of other council services
- 126 elected members.
- Powers and responsibilities determined by Parliament
- Cabinet of ten councillors makes decisions to implement policies and budget.
- Overview and Scrutiny Committee examines the cabinet's decisions and Full Council ratifies council's decisions
- Employs over 15,000 people
- Annual budget of approximately £1.2billion

Key Changes to the NHS

As a result of the Health & Social Care Act, the NHS has undergone one of the most radical changes since its inception. Primary Care Trusts and Strategic Health Authorities no longer exist. Several new organisations, including North Durham CCG, have emerged. A summary of the new organisations is detailed below:-

Clinical Commissioning Groups (CCG)

NDCCG have power and responsibility for the planning and buying of the majority of local healthcare services. They are clinically led and made up of GP practices in the Durham, Chester-le-Street & Derwentside area.

NHS Commissioning Board (NHSCB)

The NHS Commissioning Board will oversee the commissioning process and ensure key quality outcomes are achieved. It will also have responsibility for commissioning some, more specialist healthcare services such as prison health, military healthcare and primary care services including GP, dentistry, optometry and pharmacy services.

The Commissioning Board operate at a national, regional and local level. Locally, the NHS Commissioning Board will have one Local Area Team (LAT) covering County, Durham, Darlington and Teesside. The LAT will have its own clinical senate, a group of clinical professionals to provide expertise at a strategic level.

HealthWatch

HealthWatch is an independent consumer champion created to gather and represent the views of the public. It will operate at a national and local level. At a national level, HealthWatch will be a committee of the Care Quality Commission (CQC).

At a local level, Local Involvement Networks (LINKs) will become local HealthWatch organisations which will scrutinise adult health and social care services. Durham County Council is responsible for commissioning a service to develop and provide a HealthWatch service for County Durham. Local HealthWatch will provide a complaints advocacy service and it will report concerns about the quality of health care to HealthWatch England, which can then recommend that the CQC take action.

Health & Wellbeing Boards

Health & Wellbeing Boards will bring together professionals from CCGs, HealthWatch and local councils to develop a shared view about community needs and support the joint commissioning of NHS, social care and public health services. Members of Health & Wellbeing Boards will include local elected members, local HealthWatch representatives.

Public Health England

Public Health England is an organisation that will provide health protection advice and support nationally as well as sharing best practice and innovative public health campaigns and approaches. At a local level, responsibility for commissioning public health services such as smoking cessation, sexual health and weight management have transferred to Durham County Council.

Commissioning Support Services/Units (CSS/CSU)

CSS or CSUs will supply a range of 'behind the scenes' commissioning services to CCGs so that CCGs do not need to have such services in-house. This included contracting and procurement services, service redesign and communications and patient involvement support. Commissioning Support Units will be commercially-minded, customer-focussed organisations designed to support CCGs in effectively commissioning healthcare for their local populations. There will be one CSU, called North East Commissioning Support (NECS), covering the Northumberland, Tyne & Wear, County Durham, Darlington and Teesside.

NECS – North of England Commissioning Support

Commissioning Support Units were set up to help free up GP and clinicians to focus on patient care. By providing a range of services and solutions for them we help improve outcomes for patients and healthcare for local communities.

NECS stands for North of England Commissioning Support. Based in the north of the country, we have over 700 staff working across Teesside, Durham, Tyne and Wear and Cumbria.

Our customers include 13 Clinical Commissioning Groups (CCGs) across the north east and Cumbria, covering a population of over 3.5million in both densely populated urban areas and very isolated rural communities.

Why we're here

Our vision is to enable life changing improvements to the health and wellbeing of communities. We will do this by providing innovative solutions for our customers, enabling them to achieve their goals.

We aim to:

- be a sustainable and profitable business
- create loyal customers delighted with our excellent services
- be an inspiring and fulfilling place to work.

We offer end to end commissioning support. This includes:-

Business Support

Communications and Engagement

Procurement and Provider Management

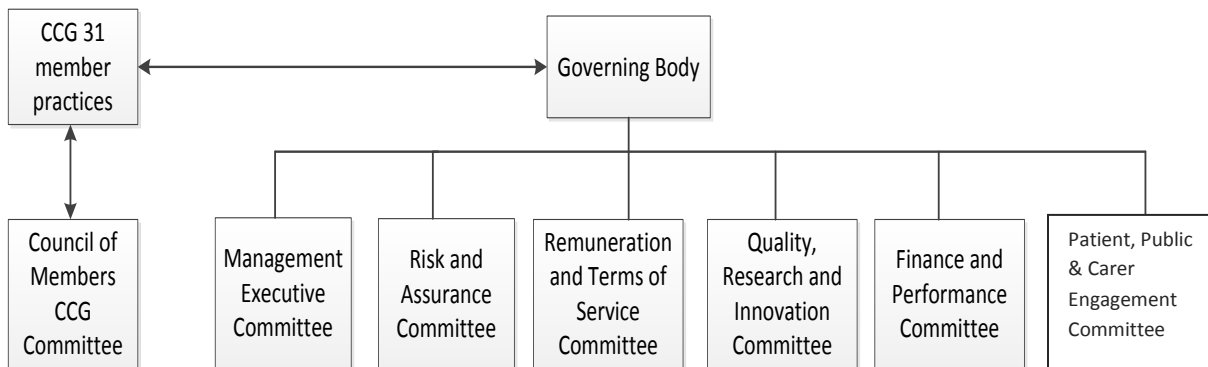
Transformation and Service Planning

Clinical Support

Business Intelligence

PPCE

The role of this Patient, Public and Carer Engagement (PPCE) Committee is to examine and review the PPCE engagement activity, associated processes, and governance arrangements of the Clinical Commissioning Group.



CQC

The role of the CQC (Care Quality Commission) is to make sure that hospitals, care homes, dental and general practices and other care services in England provide people with safe, effective and high-quality care, and encourage them to make improvements.

It works in the following ways.

Sets standards of quality and safety.

Register, Monitor, inspect and regulate care services. Taking appropriate action if care services are failing to meet the standards.

Carrying out in-depth investigations to look at care across the system.

Reporting on the quality of care services.

Making fair and authoritative judgements, supported by the best information and evidence challenging all providers.

Protecting the rights of vulnerable people.

Involving the public and people who receive care in our work and working in partnership with other organisations and Local groups.

Durham Community Action

Recognised as a leading infrastructure support organisation for County Durham, they provide advice, support and assistance to the PRG. Their staff work closely with the PRG and its sub groups to identify their needs, to help find resources, and to provide the support and encouragement to help the PRG make things happen.